



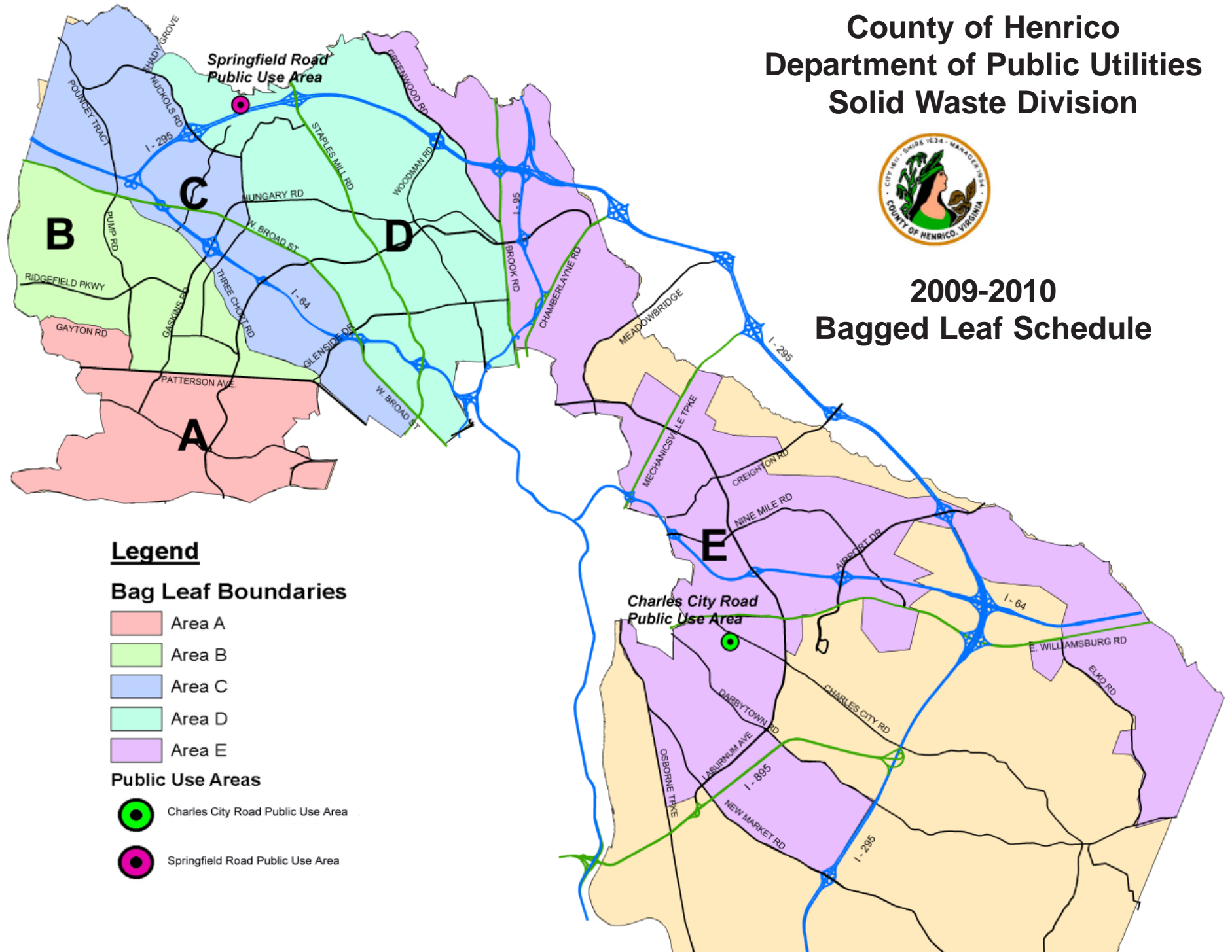
County of Henrico  
 Department of Public Utilities  
 Solid Waste Division



2009-2010  
 Bagged Leaf Schedule

2009-2010  
 Bagged Leaf Schedule

<b>Area B</b>	Nov. 9 - Nov. 15 Dec. 28 - Jan. 3 Feb. 1 - Feb. 7
<b>Area C</b>	Nov. 16 - Nov. 22 Jan. 4 - Jan. 10 Feb. 8 - Feb. 14
<b>Area D</b>	Nov. 30 - Dec. 6 Jan. 11 - Jan. 17 Feb. 15 - Feb. 21
<b>Area E</b>	Dec. 7 - Dec. 13 Jan. 18 - Jan. 24 Feb. 22 - Feb. 28
<b>Area A</b>	Dec. 14 - Dec. 20 Jan. 25 - Jan. 31 March 1 - March 7



**County of Henrico  
Department of Public Utilities  
Solid Waste Division**

***Bagged Leaf Collection***  
**Nov. 9, 2009 - March 7, 2010**

The shaded sections on the map in this brochure show our collection areas. There will be one pickup on each street during the weeks scheduled for your area. There is no limit to the number of bags you may bring to the curb during each of your three pick-ups.

To assure the best service, please note the following guidelines:

- ▶ It is not necessary to call to place an order if you live in a scheduled pickup area.
- ▶ We do not charge a fee for bagged leaf collection.
- ▶ Bagged leaves should be at the edge of the road by 7 a.m. on the Monday of the pickup week.
- ▶ Bags should contain only leaves. Do not put garbage or debris in the bags.
- ▶ We cannot collect bags that are not at the curb or accessible from the street.
- ▶ We are not able to provide the specific day we will arrive in your neighborhood. The workload varies during the fall, and the first collections are usually heavy.
- ▶ We frequently work weekends and during the holiday weeks in the heaviest collection periods to finish each zone.
- ▶ If you are concerned that we missed your home or if you need other information about the collection program, please call (804) 727-8770.
- ▶ If you live outside the shaded area on the map, call (804)727-8770 to request information on collection of bagged leaves at your residence.

**Leaf Burning**



It is illegal to burn leaves if you live in a shaded area on the map in this brochure. Residents living in unshaded areas may burn leaves as allowed by the Fire Marshal. For more information, please call the Fire Marshal's office at (804) 501-4900.

**Public Use Areas**

Public Use Areas located at 2075 Charles City Road and 10600 Ford's Country Lane will accept bagged leaves during the collection program at no charge, if you wish to haul them there yourself. Leaves and yard waste that are not bagged are accepted at no charge year-round at these sites. For more information, please call 222-7739 for the Charles City Road facility and 747-1865 for the Ford's Country Lane facility. The Public Use Areas are open from 7:30 a.m. to 7 p.m., seven days a week. The Public Use Areas are closed for a half-day on Christmas Eve and all day on Christmas, New Year's Day, Fourth of July, and Thanksgiving.

**Leaf Vacuuming Service**

If you prefer not to bag your leaves, a vacuum service is available from November 2, 2009, through April 23, 2010. There is a \$30 fee for each order for this service. Leaves must be accessible from the edge of the road. Before requesting the service, make sure that leaves are at the edge of the road and free from trash, sticks, and debris. Local farmers frequently use vacuumed leaves, but cannot use them if they are mixed with trash and sticks. Place your order on our Web site at: [www.henricodpu.org](http://www.henricodpu.org) or by calling (804) 501-4275. Leaves will be collected as soon as possible once your order is received. Your patience is appreciated since weather conditions and heavy volumes of work sometimes cause a delay in processing orders.

**Recycling Your Leaves**

To enhance and nourish your lawn and garden, consider mulching and composting as an alternative.

The Virginia Cooperative Extension Office recommends using shredded leaves as a mulch. Placing your leaves through a shredder or a mulching mower provides excellent all-purpose mulch that can be used around plants immediately. A two to three - inch layer of leaves provides good weed control. Shredded leaves will decompose fairly quickly. Whole leaves can also be used.

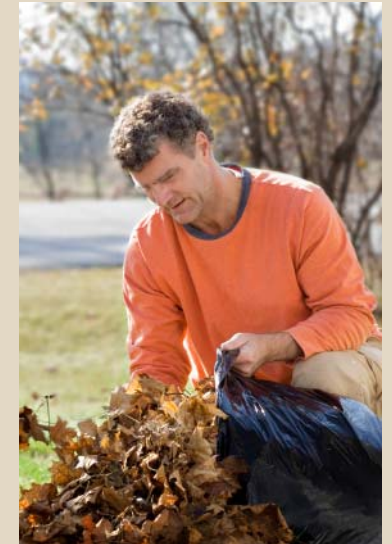
Another easy alternative is to compost your leaves. Leaf compost is an excellent soil amendment, adding humus and returning valuable nutrients to the soil. You can build a compost pile or even use a plastic trash bag to compost small amounts of leaves.

For more information on mulching or composting leaves, please call the Henrico County Extension Service at (804) 501-5160 or visit them online at [www.ext.vt.edu](http://www.ext.vt.edu).



**County of Henrico  
Department of Public Utilities  
Solid Waste Division  
[www.henricodpu.org](http://www.henricodpu.org)  
(804) 501-4275**

**BAGGED  
LEAF  
COLLECTION**



**November 9, 2009  
through  
March 7, 2010**



**County of Henrico  
Department of  
Public Utilities  
Solid Waste Division  
[www.henricodpu.org](http://www.henricodpu.org)**