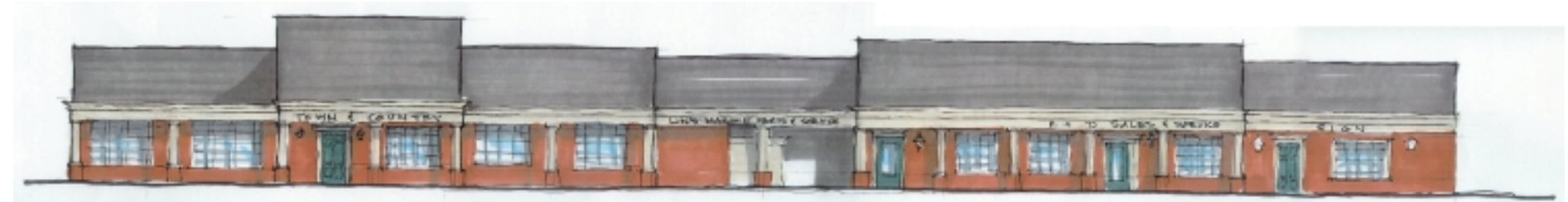




Sketch of proposed improvements at 400 W. Williamsburg Road and the western corridor entrance



Alternative facade improvements for the 400 W. Williamsburg Road site (TOP VIEW: Primarily paint/awnings/sign improvements, BOTTOM VIEW: Structural changes)



An artist's rendering of potential improvements to the Shake Shop



N & W Salvage proposed sign graphic's enhancement



Two design schemes for facade enhancement of Chuck's Supermarket (TOP VIEW: Structural/awning/sign/display enhancement, BOTTOM VIEW: Awning/Sign enhancement)



Site Example Graphics, different degrees of enhancement